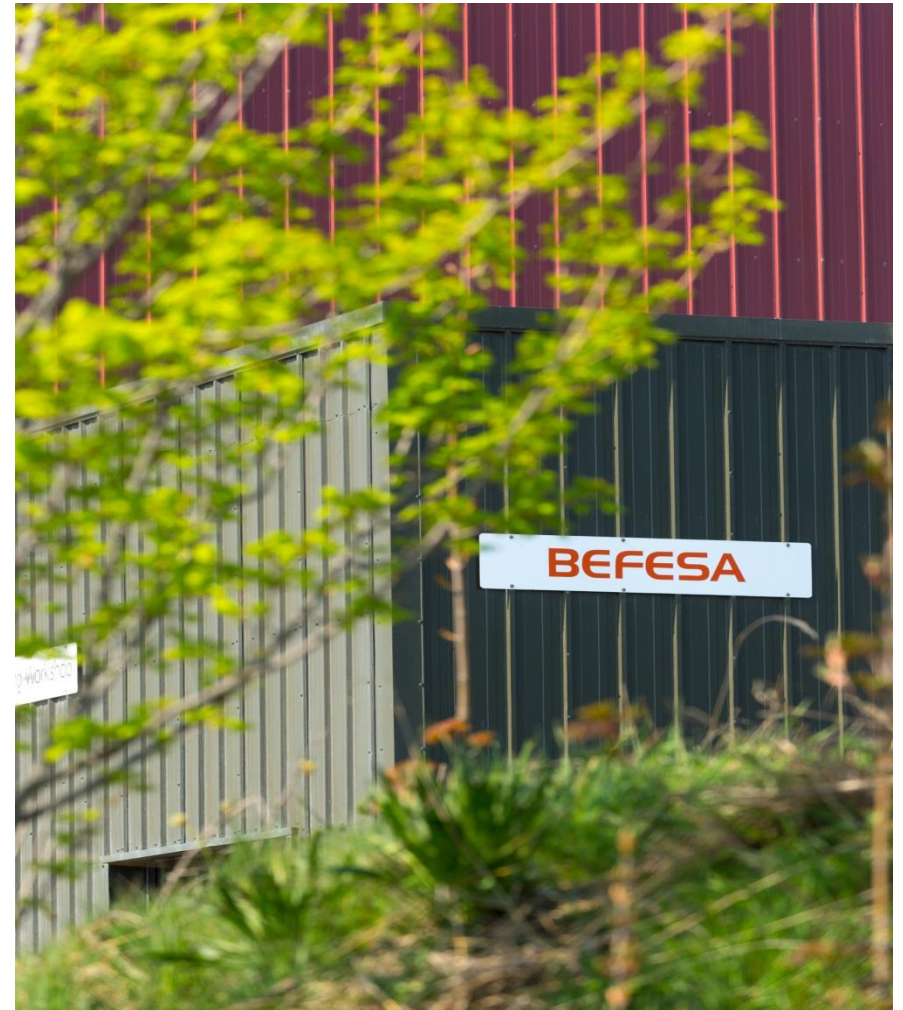


**Befesa**

**Adrian Platt**



# **Achieving community links through socially responsible actions and managing community relations**

## **Our values – and Mission Statement**

**Befesa provides solutions for managing industrial residues, with a strong emphasis on its social responsibility to help create a sustainable world**



# **Aluminium Industrial Sector**

# **Aluminium Wastes Recycling**

# Aluminium Uses

**It is used in an extensive range of products:**

**Aircraft**

**Cars**

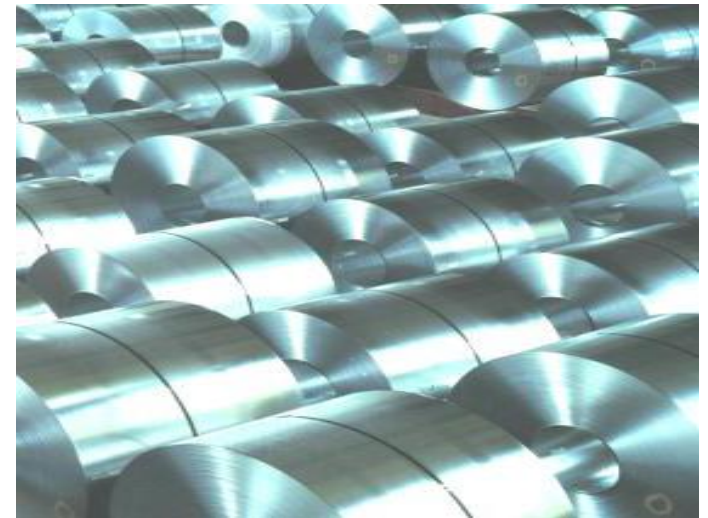
**Ship building**

**Rail**

**Construction**

**Food and Drinks Packaging**

**Electrical Cable**



## Aluminium a Sustainable Future

Is endlessly recyclable

Over 75% of all aluminium ever produced is still in use

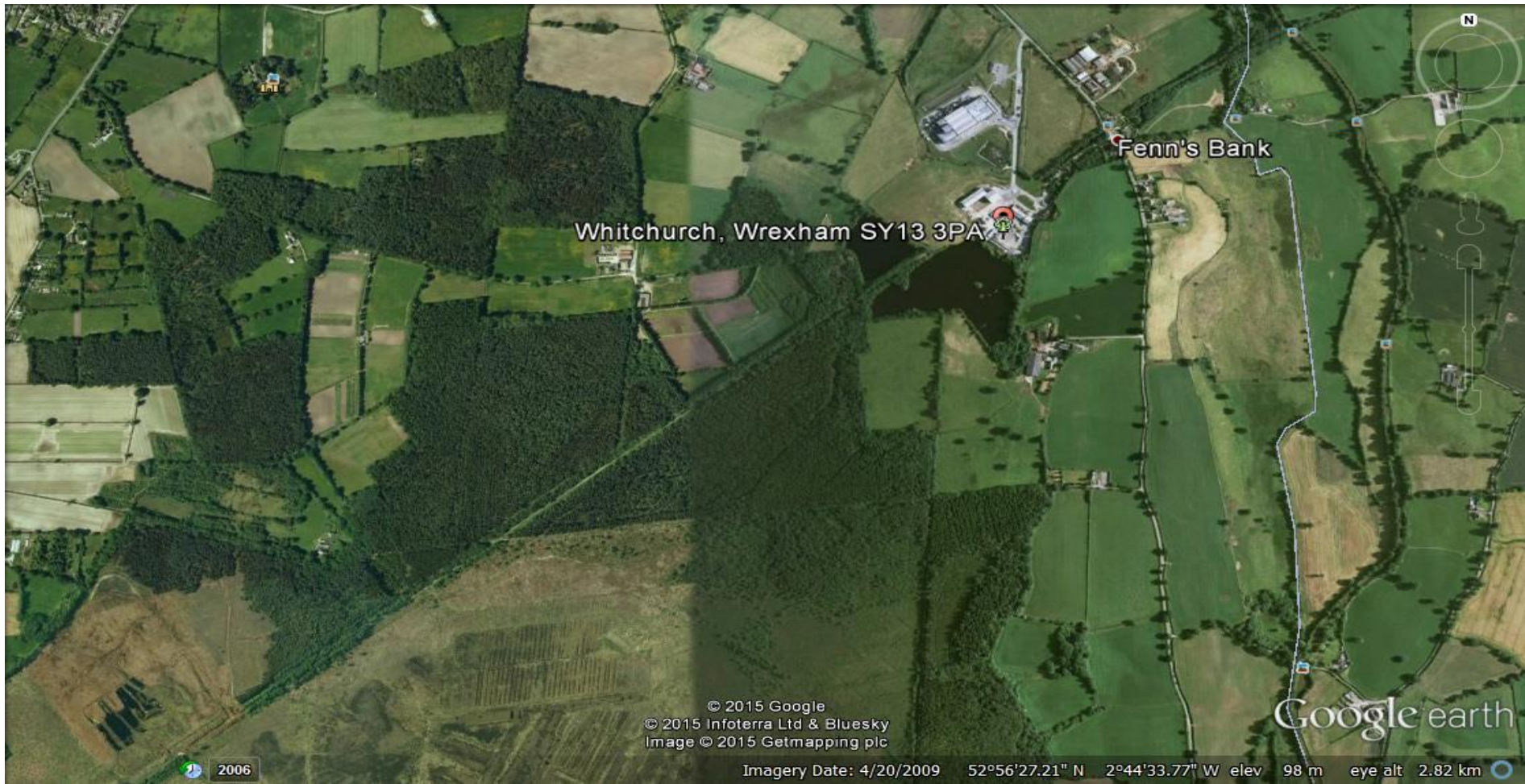


# **Befesa and Corporate Social Responsibility (CSR)**

# **Befesa Whitchurch and our local community**

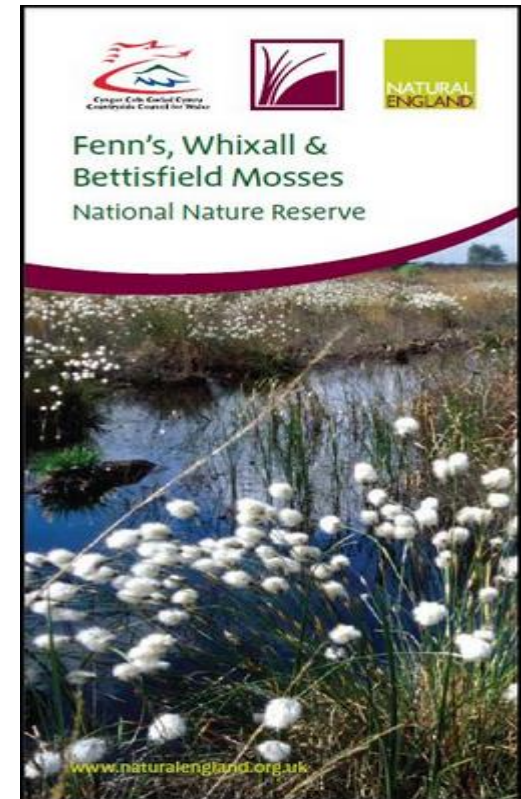


## Our Shropshire Recycling Plant



# How we work to achieve community links through socially responsible actions

## Fenn's, Whixall and Bettisfield Mosses National Nature Reserve (NNR)



# **Local Wildlife Trust**

**Shropshire Wildlife Trust**

**Cheshire Wildlife Trust**



## Good News

Local Stakeholders

Our Own Employees



**No cost**

**Visit Local Residents**

**Litter Picking**

**MMBEN Chair**



**Meres & Mosses  
Business  
Environment  
Network**

# Listen to your local community

## Screening Works



## Keep it Local



## CSR

- **Good for Our Business**
- **Creates Shareholder Value**
- **Our Customers**
- **Good for Our Employees**
- **Good for Our Local Community**





Thank you  
**BEFESA**

